

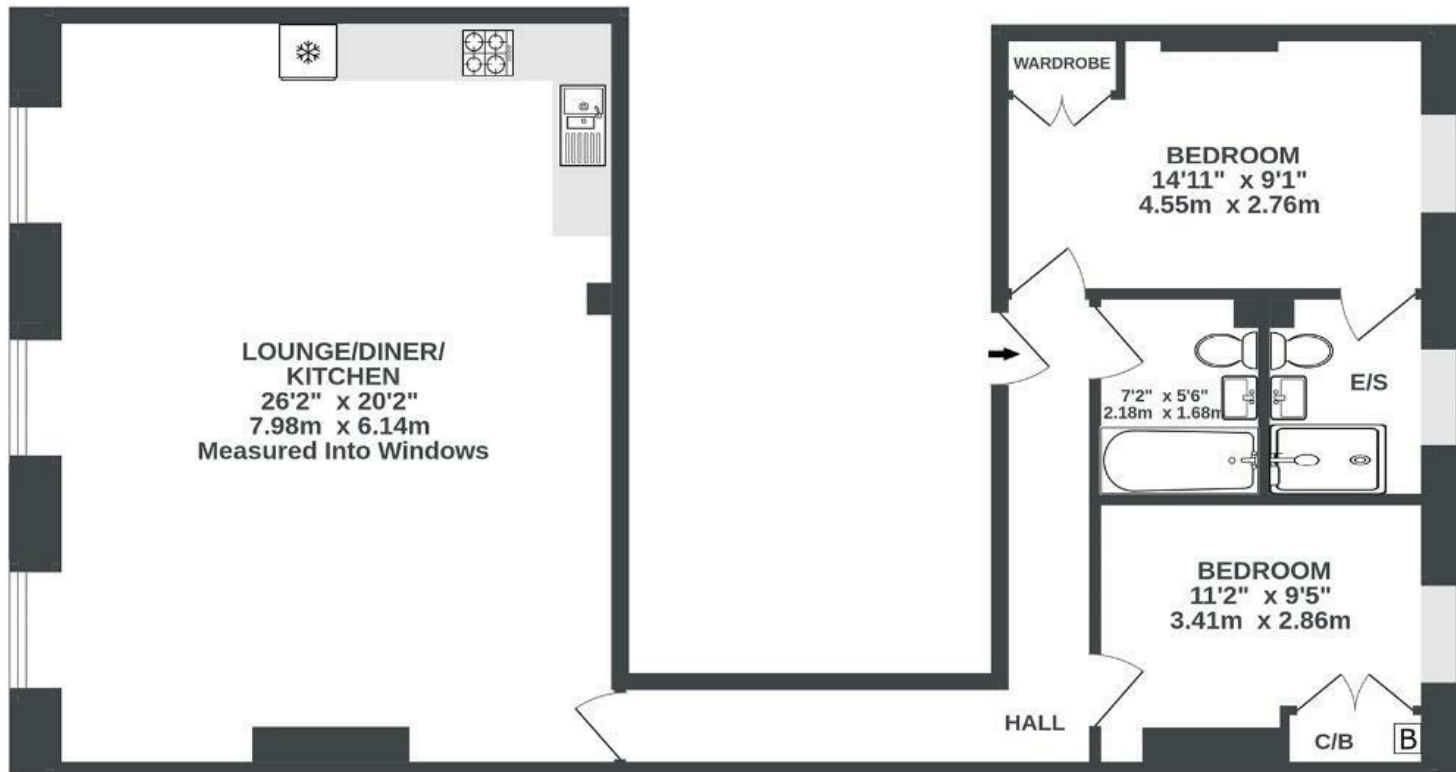
# Portland Mansions

ST PAULS

APPROXIMATE FLOOR AREA  
85.2 SQM / 917 SQFT



SECOND FLOOR  
917 sq.ft. (85.2 sq.m.) approx.



Illustrations are for reference purposes only, measurements are approximate, not to scale.

Boardwalk

# 11-12 Portland , BRISTOL



£385,000



BS2 8SR



2 Bedrooms



2 Bathrooms

*"This apartment has been a wonderful home. The high ceilings and the huge windows create an incredible sense of space and light. On the second floor the elevated view is directly onto mature lime and cherry trees - a beautiful green outlook in the heart of the city. The flat's open-plan layout is great for having friends around - new visitors always comment on what a lovely, calming space it is. The square has a real sense of community with regular events at the converted St Paul's church (Circomedia) and in the park."*

